

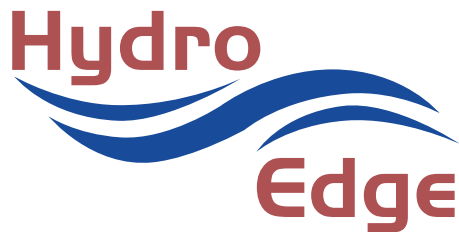


Thermal Edge Inc.™

A2W60

7,773 BTUH (@ 95°F Enclosure & 50°F Water Temperatures)
Indoor/Outdoor, UL Types 12, 4 & 4X Available

When ambient conditions are extreme, Air-to-Water Heat Exchangers by Thermal Edge provide reliable, efficient, and cost-effective solutions. Ideal for high ambient conditions and tough industrial environments, these air-to-water heat exchangers provide contaminant-free cooling while minimizing energy use and maintenance cost.



Key Design Features

- Protection from outdoor contaminants with a closed loop design.
- Constant elimination of condensate
- Easy maintenance with a filter free design
- Flexible application with the narrow body style fitting 12" deep enclosures.
- Eliminates water and corrosion buildup in washdown applications with a sloped roof design and seam welded shroud.
- Ruggedly designed for manufacturing environments in powder coated steel or corrosion resistant stainless steel
- Maintains UL Tested NEMA Type 12, 4, and 4X
- Ambient operating temperature: 34°F - 140°F
- Overall dimensions: 29" H x 11.8" W x 6" D

Applications

Ideal for food processing plants, agricultural irrigation, waste-water treatment, automotive plants, flour milling and mining operations where water is readily available onsite.

Options:

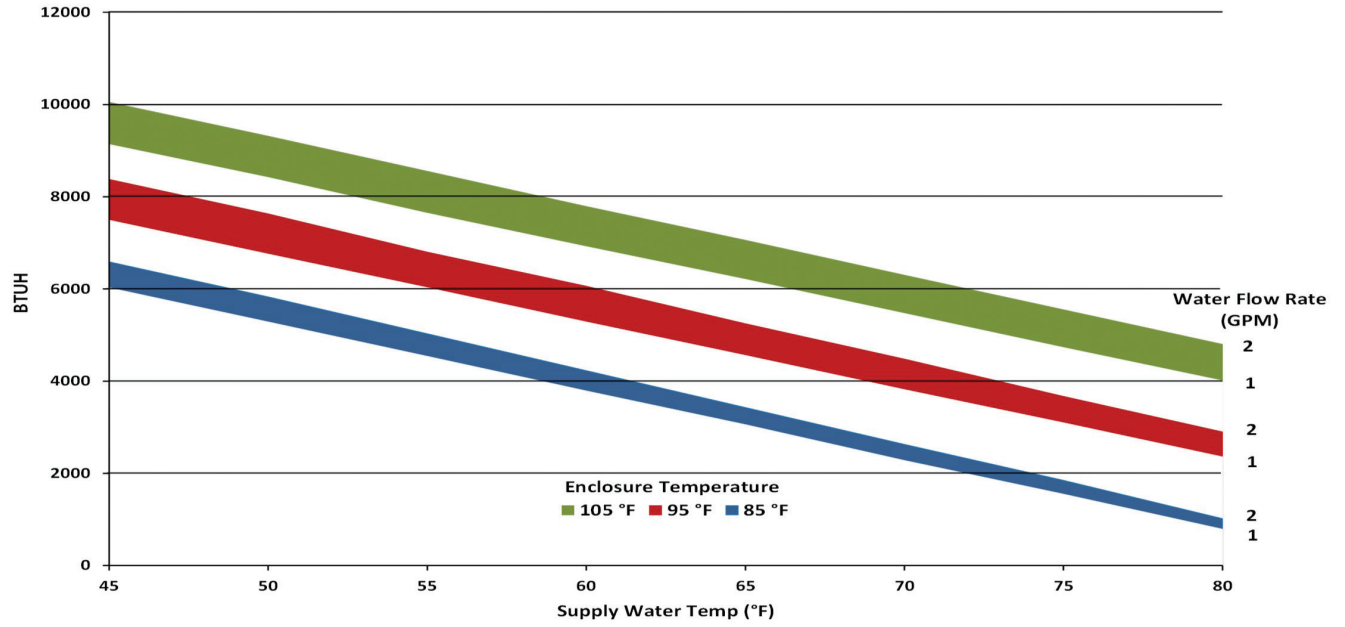
- **Integrated digital controller** for precise control of enclosure temperature
- **Solenoid valve** controls water flow, eliminating waste
- Dry Contact Alarm
- Corrosive Environment Package
- Open Door Kill Switch
- 316 Stainless Steel Housing
- Enclosure mounted controller
- Remote Monitoring Options
- UL Power Cord

Accessories:

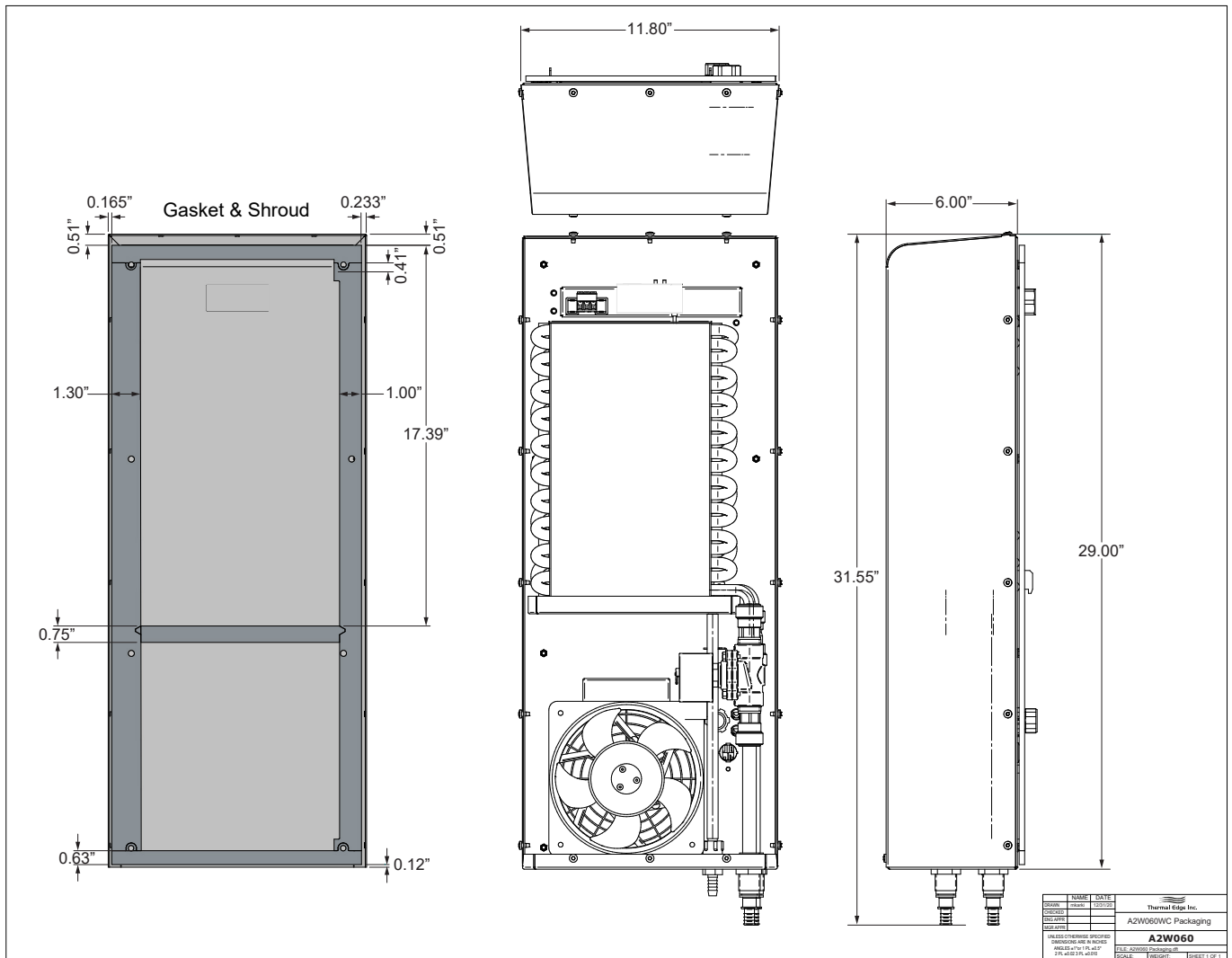
- Water Supply Shutoff Valves

Model	UL Type	Material	Voltage/Phase/Hz.	Running Amps	Air Flow Rate (CFM @ 0 Static Pressure)	H x W x D	Weight (lbs.)
A2W601212	12	Powder coated steel	115/1/50-60	0.59	234	29" x 11.8" x 6"	33.75
A2W601204	4	Powder coated steel	115/1/50-60	0.59	234	29" x 11.8" x 6"	33.75
A2W60124X	4X	Stainless steel	115/1/50-60	0.59	234	29" x 11.8" x 6"	33.75
A2W602312	12	Powder coated steel	230/1/50-60	0.38	234	29" x 11.8" x 6"	33.75
A2W602304	4	Powder coated steel	230/1/50-60	0.38	234	29" x 11.8" x 6"	33.75
A2W60234X	4X	Stainless steel	230/1/50-60	0.38	234	29" x 11.8" x 6"	33.75
A2W604812	12	Powder coated steel	460/1/50-60	0.19	234	29" x 11.8" x 6"	33.75
A2W604804	4	Powder coated steel	460/1/50-60	0.19	234	29" x 11.8" x 6"	33.75
A2W60484X	4X	Stainless steel	460/1/50-60	0.19	234	29" x 11.8" x 6"	33.75

A2W60



Testing done under controlled conditions. Actual performance may vary



All information subject to change without notice



Get the Edge... Get Thermal Edge
Temperature Control Solutions for Electrical Enclosures

(972) 580-0200 • www.thermal-edge.com • thermalinfo@thermal-edge.com

