



Thermal Edge Inc.™

A2W30

**3690 BTUH (@ 95°F Enclosure & 50°F Water Temperatures)
Indoor/Outdoor, UL Types 12, 4 & 4X Available**

When ambient conditions are extreme, Air-to-Water Heat Exchangers by Thermal Edge provide reliable, efficient, and cost-effective solutions. Ideal for high ambient conditions and tough industrial environments, these air-to-water heat exchangers provide contaminant-free cooling while minimizing energy use and maintenance cost.



Key Design Features

- Protection from outdoor contaminants with a closed loop design.
- Constant elimination of condensate
- Easy maintenance with a filter free design
- Flexible application with the narrow body style fitting 12" deep enclosures.
- Eliminates water and corrosion buildup in washdown applications with a sloped roof design and seam welded shroud.
- Ruggedly designed for manufacturing environments in powder coated steel or corrosion resistant stainless steel
- Maintains UL Tested NEMA Type 12, 4, and 4X
- Ambient operating temperature: 34°F - 140°F
- Overall dimensions: 19.7" H x 11.8" W x 5" D

Applications

Ideal for food processing plants, agricultural irrigation, waste-water treatment, automotive plants, flour milling and mining operations where water is readily available onsite.

Options:

- **Integrated digital controller** for precise control of enclosure temperature
- **Solenoid valve** controls water flow, eliminating waste
- Dry Contact Alarm
- Corrosive Environment Package
- Open Door Kill Switch
- 316 Stainless Steel Housing
- Enclosure mounted controller
- Remote Monitoring Options
- UL Power Cord

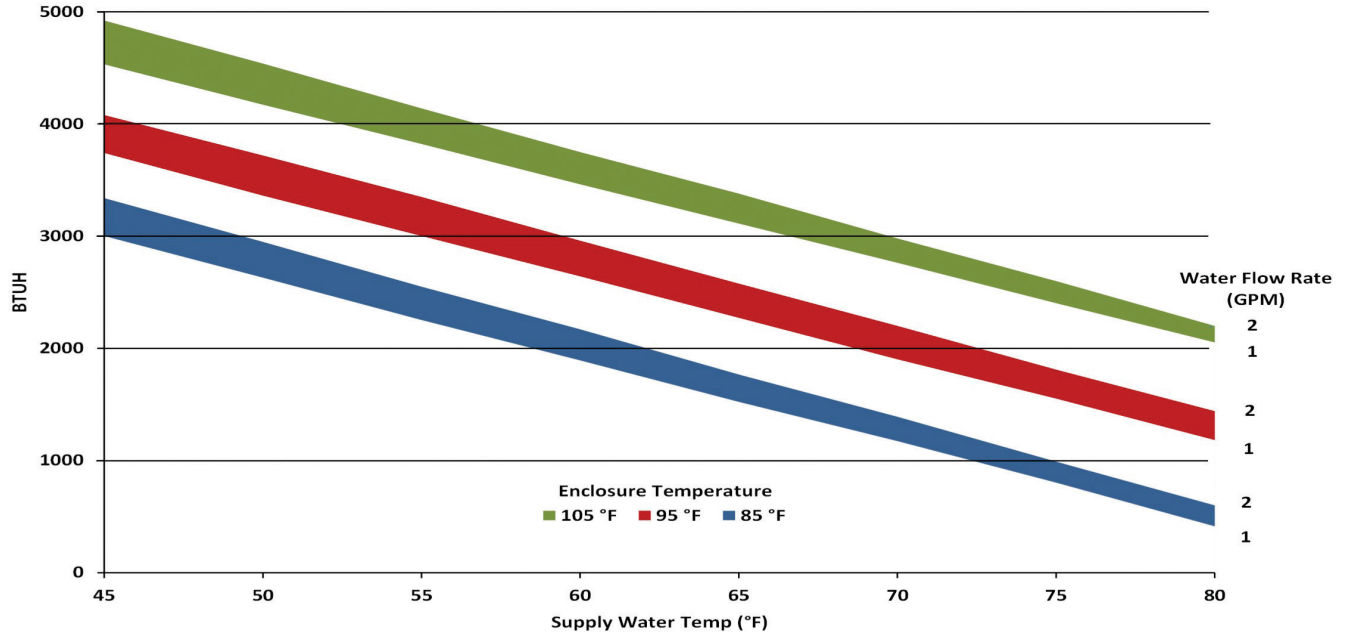
Accessories:

- Water Supply Shutoff Valves

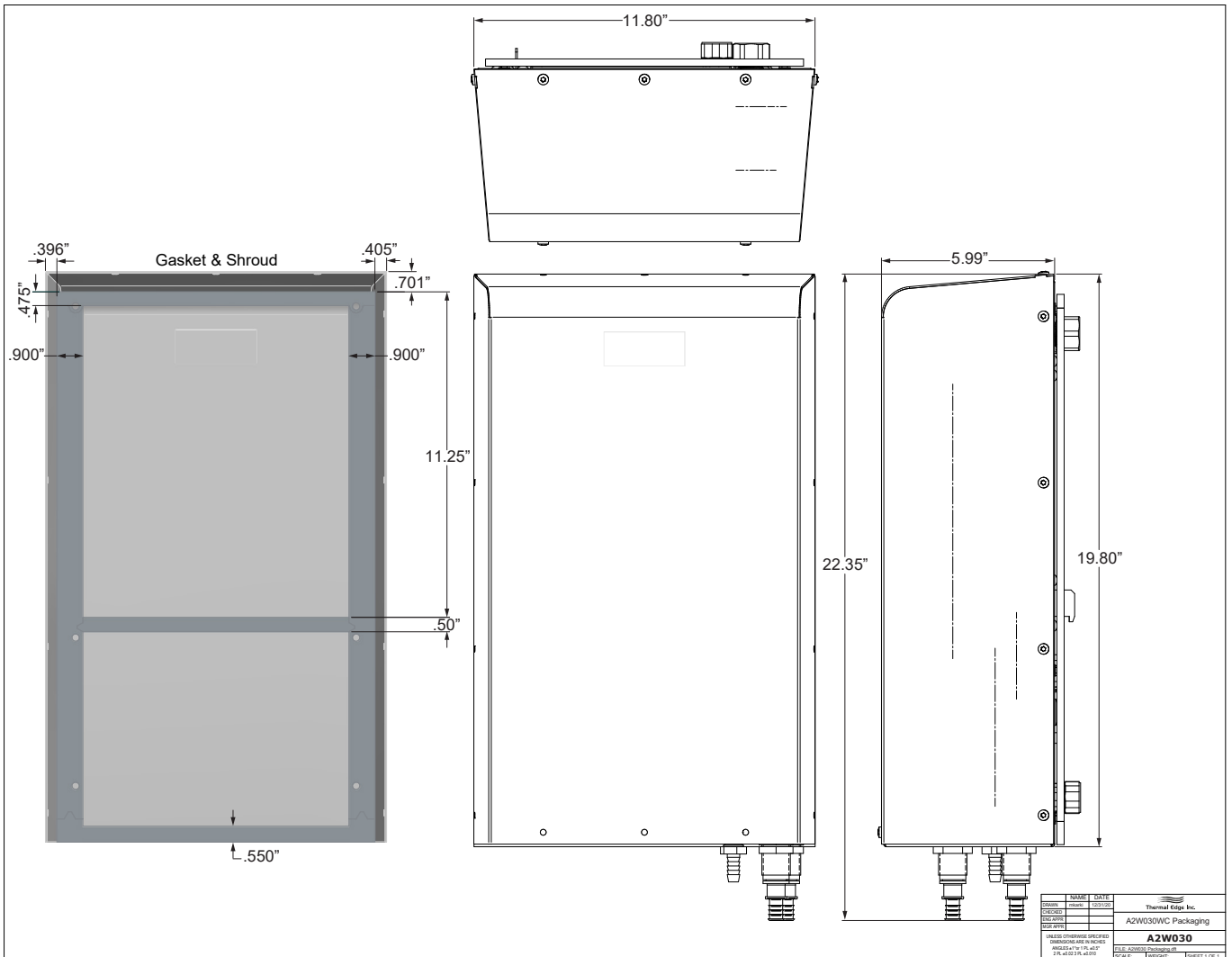


Model	UL Type	Material	Voltage/Phase/Hz.	Running Amps	Air Flow Rate (CFM @ 0 Static Pressure)	H x W x D	Weight (lbs.)
A2W301212	12	Powder coated steel	115/1/50-60	0.528	129	19.7" x 11.8" x 5"	21.4
A2W301204	4	Powder coated steel	115/1/50-60	0.528	129	19.7" x 11.8" x 5"	21.4
A2W30124X	4X	Stainless steel	115/1/50-60	0.528	129	19.7" x 11.8" x 5"	21.4
A2W302312	12	Powder coated steel	230/1/50-60	0.23	129	19.7" x 11.8" x 5"	21.4
A2W302304	4	Powder coated steel	230/1/50-60	0.23	129	19.7" x 11.8" x 5"	21.4
A2W30234X	4X	Stainless steel	230/1/50-60	0.23	129	19.7" x 11.8" x 5"	21.4
A2W304812	12	Powder coated steel	460/1/50-60	0.12	129	19.7" x 11.8" x 5"	21.4
A2W304804	4	Powder coated steel	460/1/50-60	0.12	129	19.7" x 11.8" x 5"	21.4
A2W30484X	4X	Stainless steel	460/1/50-60	0.12	129	19.7" x 11.8" x 5"	21.4

A2W30



Testing done under controlled conditions. Actual performance may vary



All information subject to change without notice

Get the Edge... Get Thermal Edge
Temperature Control Solutions for Electrical Enclosures

(972) 580-0200 • www.thermal-edge.com • thermalinfo@thermal-edge.com

