



# Thermal Edge Inc.™

## CS011 (50 Hz)

1,000 BTUH

Indoor/Outdoor, UL Types 12, 4 & 4X Available



Engineered & manufactured to endure the most difficult of environments and applications. Thermal Edge air conditioners will exceed environmental requirements in applications like Steel, Food Processing, Petro-Chemical, Cement, Paper & Pulp and Plastics.



### Digital Temperature Controller

- Programmable set point and temperature controls
- Visible Error and/or alarm messaging
- System status indication & keypad lockout function

### Active Condensate Evaporation System

- Constant elimination of condensate
- Increases unit efficiency by pre-cooling refrigerant

### Key Design Features

- Designed with rigid chassis and seam welded shroud
- Thoughtful interior design for easy maintenance
- Narrow body style fits on 8" deep enclosure
- Filter free design

### Unit Efficiency

- Temperature operated blower control reduces power inrush and saves energy
- Highly efficient rotary compressor
- Fully insulated & sealed cabinet
- Thermal Expansion Valve to maintain cooling capacity over a broad ambient temperature range

### Compressor Protection System

- High & Low refrigerant cutouts with fault indication
- Compressor anti short cycle protection
- Thermal overload protector
- Compressor run capacitors reduce power inrush, save energy and increase compressor life

### Options:

- Dry Contact Alarm Capabilities
- Open Door Kill Switch
- Corrosive Environment Packages
- Remote Monitoring Options
- Integrated Enclosure Heat System

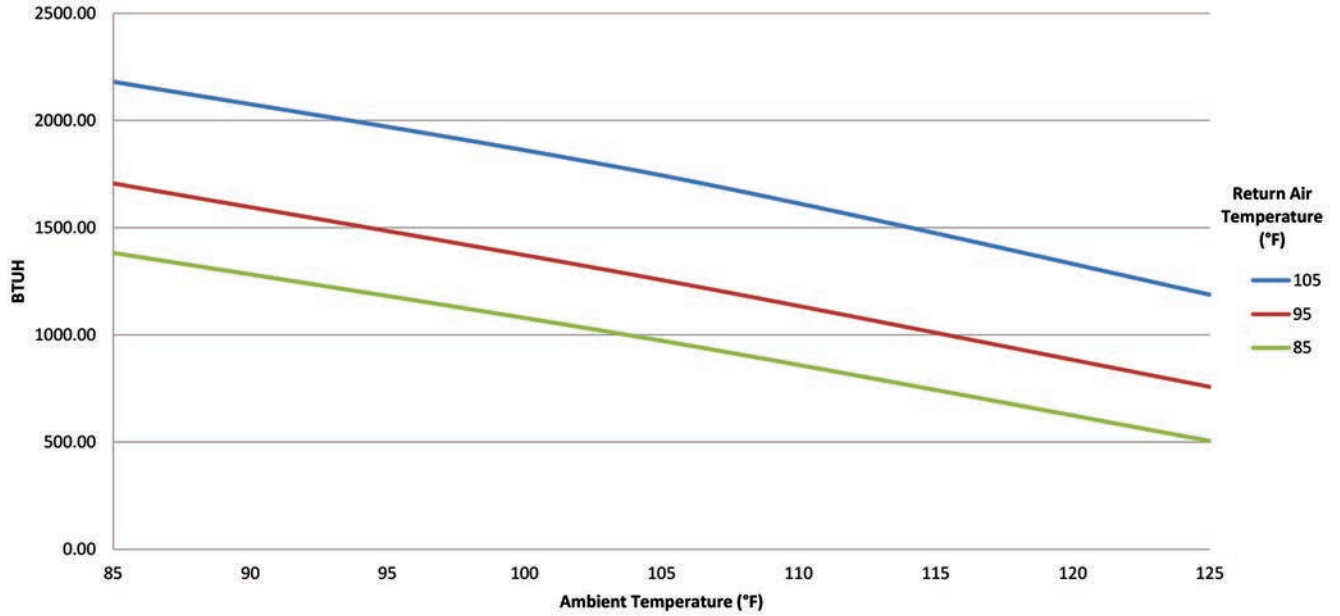


**NO WATER  
DRIPS FROM  
THERMAL EDGE  
ENCLOSURE AIR  
CONDITIONERS**

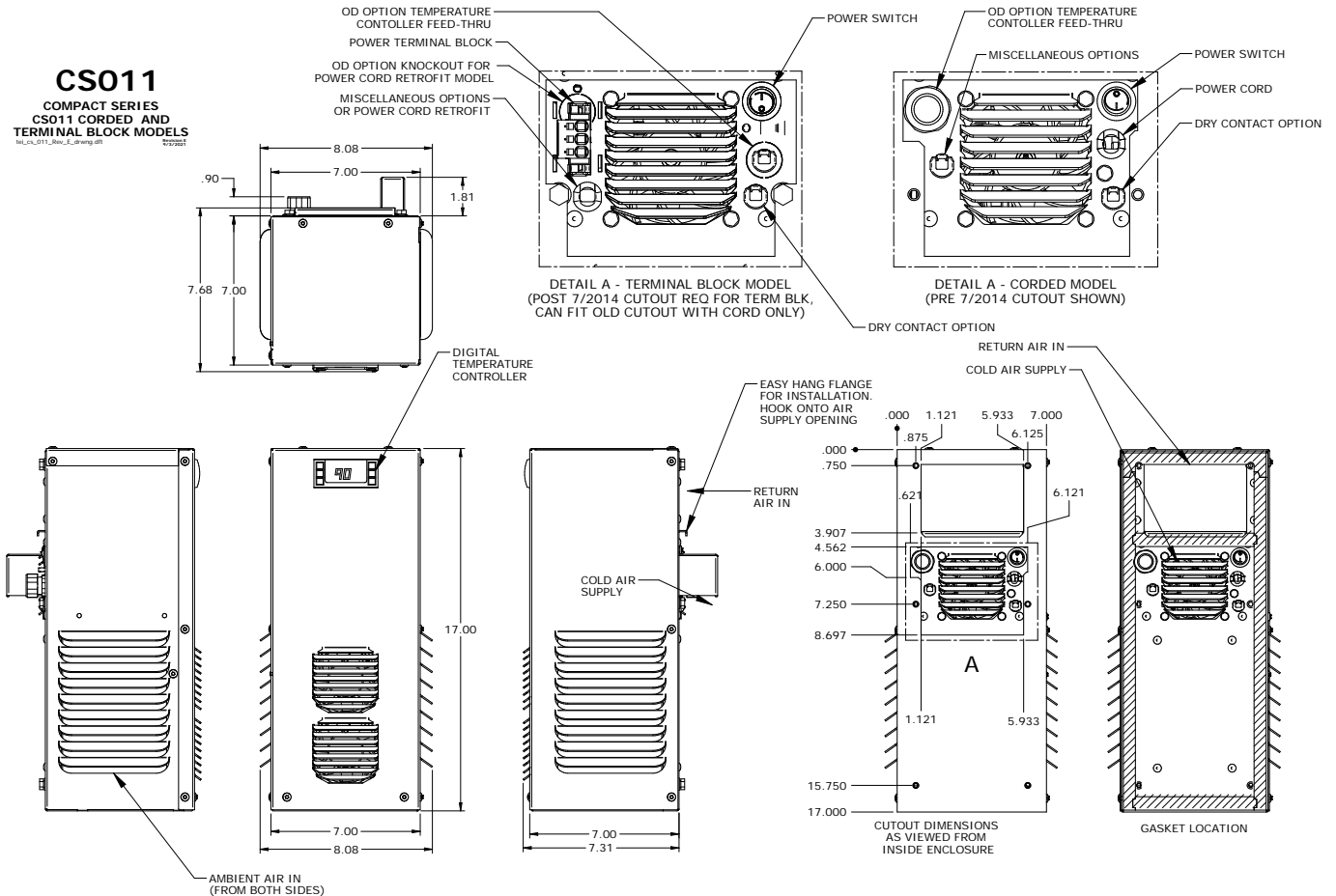
THE CS011 USES A UNIQUE 3 COIL DESIGN PROVIDING HIGH CAPACITY COOLING WHILE UTILIZING AIR INTAKE FROM EITHER SIDE. DUAL INTAKE ALLOWS FOR MOUNTING ON A WALL MOUNTED ENCLOSURE ON THE RIGHT OR LEFT SIDE OF YOUR ENCLOSURE.

Model	UL Type	BTU/ Hour	Material	Voltage/ Phase/Hz.	Running Amps	Max. Amb. Temperature	H x W x D	Weight (lbs.) Unit/Ship
CS01110512	12	1000	Powder coated steel	100/1/50	2.7	125°F	17" x 7" x7"	31 / 45
CS01110504	4	1000	Powder coated steel	100/1/50	2.7	125°F	17" x 7" x7"	31 / 45
CS0111054X	4X	1000	Stainless steel	100/1/50	2.7	125°F	17" x 7" x7"	31 / 45
CS0111054XL4	4X	1000	Mill finish aluminum	100/1/50	2.7	125°F	17" x 7" x7"	24 / 38
CS01123512	12	1000	Powder coated steel	230/1/50	1.6	125°F	17" x 7" x7"	31 / 45
CS01123504	4	1000	Powder coated steel	230/1/50	1.6	125°F	17" x 7" x7"	31 / 45
CS0112354X	4X	1000	Stainless steel	230/1/50	1.6	125°F	17" x 7" x7"	31 / 45
CS0112354XL4	4X	1000	Mill finish aluminum	230/1/50	1.6	125°F	17" x 7" x7"	24 / 38

# CS011105



Testing done under controlled conditions. Actual performance may vary



ATTENTION: If ordering a replacement for a Thermal Edge air conditioner, please include the part number and serial number of the unit being replaced in your order. This will assure that we ship a replacement that is compatible with the cutout dimensions and power connection features of the older model.

All information subject to change without notice



**Get the Edge... Get Thermal Edge**  
Temperature Control Solutions for Electrical Enclosures

(972) 580-0200 • www.thermal-edge.com • thermalinfo@thermal-edge.com