



Thermal Edge Inc.™

NE050



5000 BTUH
Indoor/Outdoor, UL Types 12, 4 & 4X Available

Engineered & manufactured to endure the most difficult of environments and applications. Thermal Edge air conditioners will exceed environmental requirements in applications like *Steel, Food Processing, Petro-Chemical, Cement, Paper & Pulp and Plastics.*



Options:

- Dry Contact Alarm Capabilities
- Open Door Kill Switch
- Corrosive Environment Packages
- Low Ambient Packages
- Remote Monitoring Options
- Integrated Enclosure Heat System
- Hazardous Location Units
- Redundant Systems

Digital Temperature Controller

- Programmable set point and temperature controls
- Visible Error and/or alarm messaging
- System status indication & keypad lockout function

Active Condensate Evaporation System

- Constant elimination of condensate
- Increases unit efficiency by pre-cooling refrigerant

Key Design Features

- Sloped top to allow for water runoff
- Designed with rigid chassis and seam welded shroud
- Thoughtful interior design for easy maintenance
- Narrow body style fits on 12" enclosure

Unit Efficiency

- Temperature operated blower control reduces power inrush and saves energy
- Highly efficient rotary compressor
- Fully insulated & sealed cabinet
- Thermal Expansion Valve to maintain cooling capacity over a broad ambient temperature range

Compressor Protection System

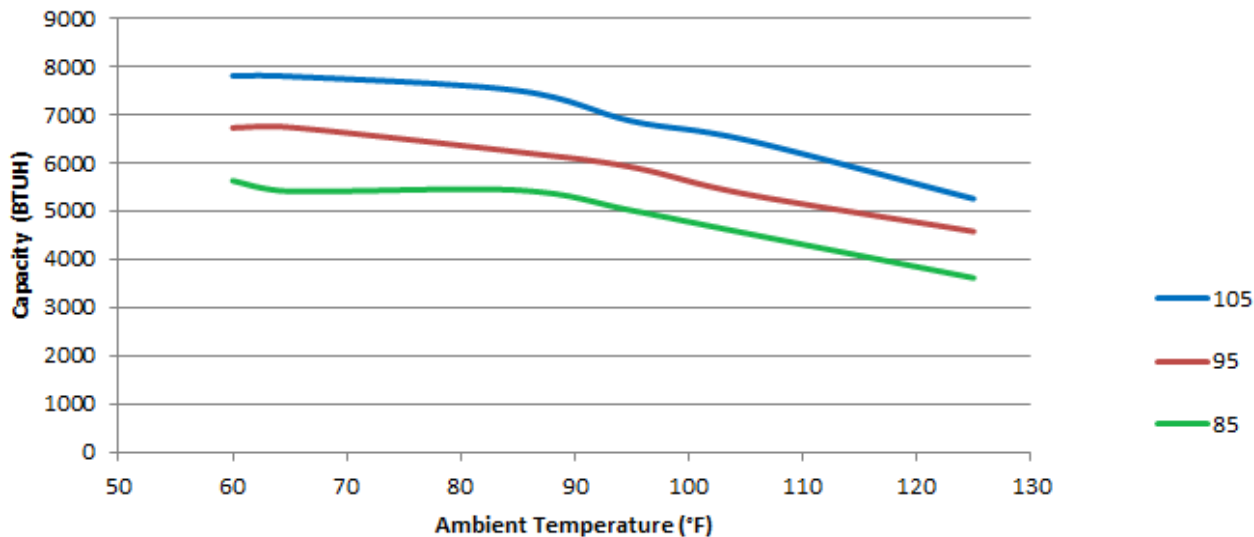
- High & Low refrigerant cutouts with fault indication
- Compressor anti short cycle protection
- Thermal overload protector
- Compressor run capacitors reduce power inrush, save energy and increase compressor life



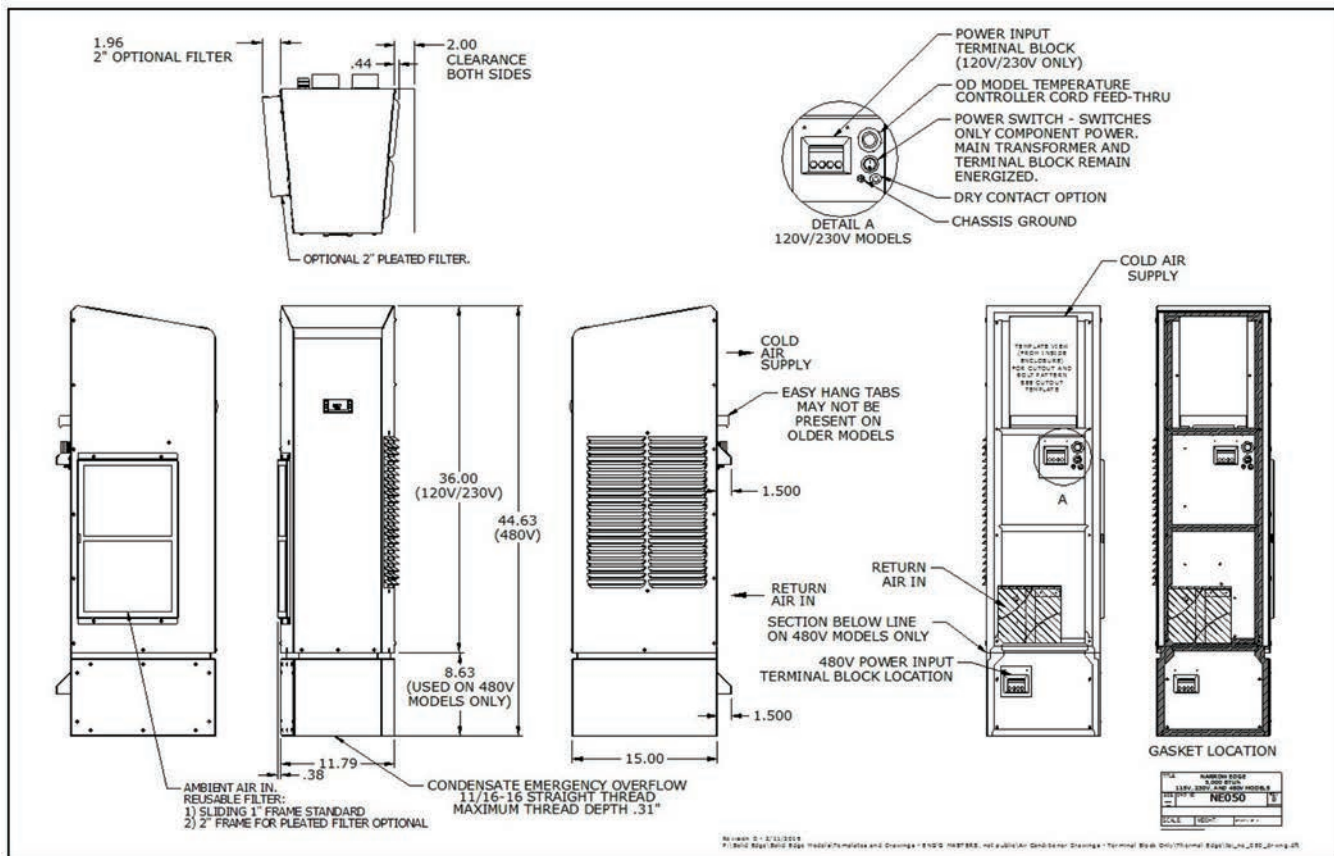
**NO WATER
 DRIPS FROM
 THERMAL EDGE
 ENCLOSURE AIR
 CONDITIONERS**

Model	UL Type	BTU/ Hour	Material	Voltage/ Phase/Hz.	Running Amps	Max. Amb. Temperature	H x W x D	Weight (lbs.) Unit/Ship
NE05012612	12	5000	Powder coated steel	115/1/60	6.87	131°F	36" x 11.8" x 15.02"	85 / 111
NE05012604	4	5000	Powder coated steel	115/1/60	6.87	131°F	36" x 11.8" x 15.02"	85 / 111
NE0501264X	4X	5000	Stainless steel	115/1/60	6.87	131°F	36" x 11.8" x 15.02"	85 / 111
NE0501264XL4	4X	5000	Mill finish aluminum	115/1/60	6.87	131°F	36" x 11.8" x 15.02"	77 / 91
NE05023612	12	5000	Powder coated steel	230/1/60	3.44	131°F	36" x 11.8" x 15.02"	92 / 106
NE05023604	4	5000	Powder coated steel	230/1/60	3.44	131°F	36" x 11.8" x 15.02"	92 / 106
NE0502364X	4X	5000	Stainless steel	230/1/60	3.44	131°F	36" x 11.8" x 15.02"	92 / 106
NE0502364XL4	4X	5000	Mill finish aluminum	230/1/60	3.44	131°F	36" x 11.8" x 15.02"	72 / 86
NE05048612	12	5000	Powder coated steel	460/1/60	1.72	131°F	44.63" x 11.8" x 15.02"	136 / 150
NE05048604	4	5000	Powder coated steel	460/1/60	1.72	131°F	44.63" x 11.8" x 15.02"	136 / 150
NE0504864X	4X	5000	Stainless steel	460/1/60	1.72	131°F	44.63" x 11.8" x 15.02"	136 / 150
NE0504864XL5	4X	5000	Mill finish aluminum	460/1/60	1.72	131°F	44.63" x 11.8" x 15.02"	111 / 125

NE050126



Testing done under controlled conditions. Actual performance may vary



ATTENTION: If ordering a replacement for a Thermal Edge air conditioner, please include the part number and serial number of the unit being replaced in your order. This will assure that we ship a replacement that is compatible with the cutout dimensions and power connection features of the older model.

All information subject to change without notice



UL File # SA32252



Get the Edge... Get Thermal Edge
 Temperature Control Solutions for Electrical Enclosures

(972) 580-0200 • www.thermal-edge.com • thermalinfo@thermal-edge.com