



Thermal Edge Inc.™



NE020

2000 BTUH

Indoor/Outdoor, UL Types 12, 4 & 4X Available

Engineered & manufactured to endure the most difficult of environments and applications. Thermal Edge air conditioners will exceed environmental requirements in applications like *Steel, Food Processing, Petro-Chemical, Cement, Paper & Pulp and Plastics.*



Options:

- Dry Contact Alarm Capabilities
- Open Door Kill Switch
- Corrosive Environment Packages
- Low Ambient Packages
- Remote Monitoring Options
- Integrated Enclosure Heat System
- Hazardous Location Units
- Redundant Systems

Digital Temperature Controller

- Programmable set point and temperature controls
- Visible Error and/or alarm messaging
- System status indication & keypad lockout function

Active Condensate Evaporation System

- Constant elimination of condensate
- Increases unit efficiency by pre-cooling refrigerant

Key Design Features

- Sloped top to allow for water runoff
- Designed with rigid chassis and seam welded shroud
- Thoughtful interior design for easy maintenance
- Narrow body style fits on 12" enclosure

Unit Efficiency

- Temperature operated blower control reduces power inrush and saves energy
- Highly efficient rotary compressor
- Fully insulated & sealed cabinet
- Thermal Expansion Valve to maintain cooling capacity over a broad ambient temperature range

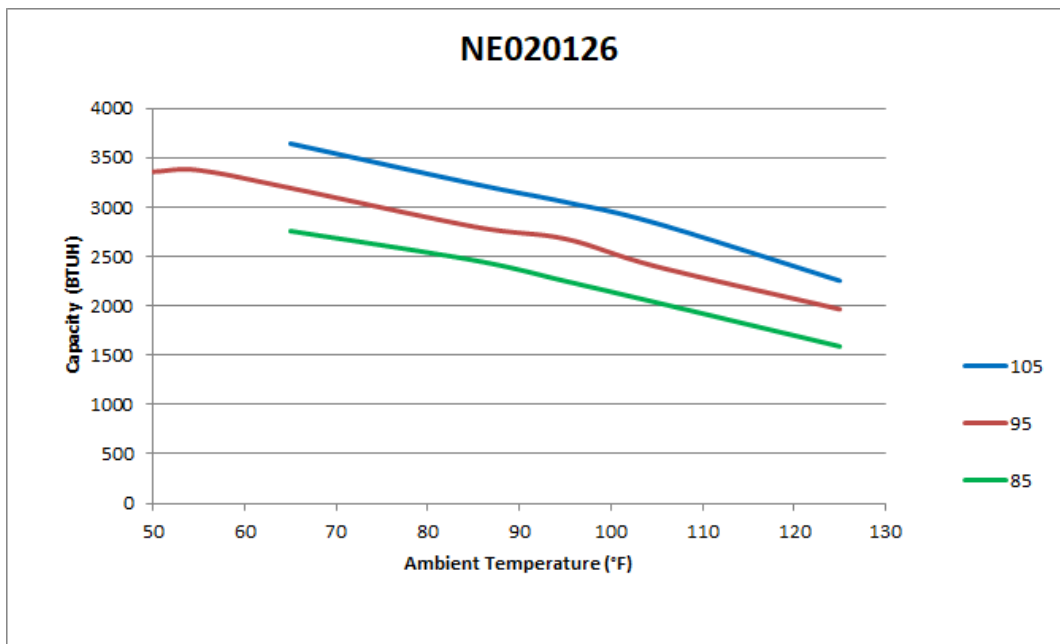
Compressor Protection System

- High & Low refrigerant cutouts with fault indication
- Compressor anti short cycle protection
- Thermal overload protector
- Compressor run capacitors reduce power inrush, save energy and increase compressor life

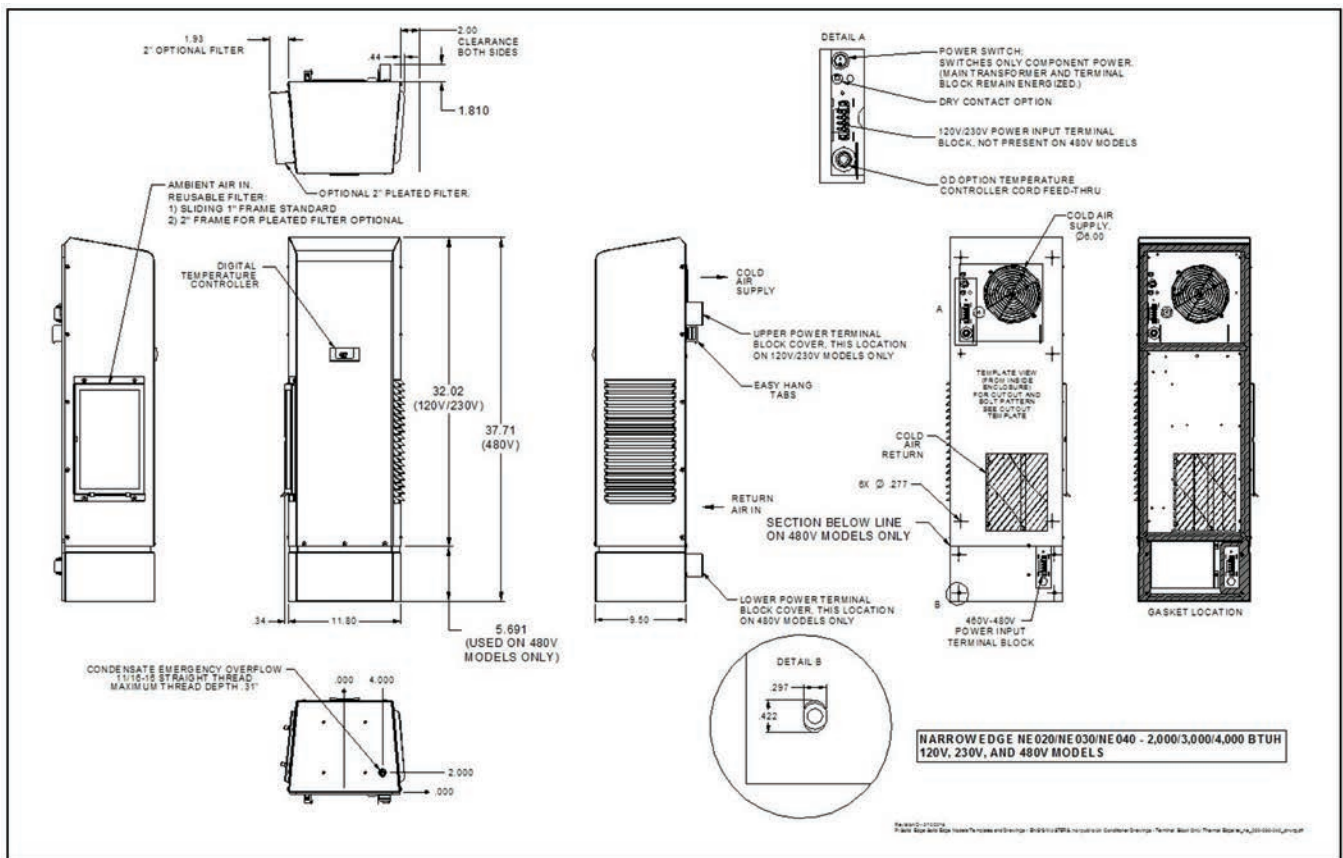


**NO WATER
DRIPS FROM
THERMAL EDGE
ENCLOSURE AIR
CONDITIONERS**

Model	UL Type	BTU/ Hour	Material	Voltage/ Phase/Hz.	Running Amps	Max. Amb. Temperature	H x W x D	Weight (lbs.) Unit/Ship
NE02012612	12	2000	Powder coated steel	115/1/60	3.76	125°F	32" x 11.8" x 9.5"	65 / 79
NE02012604	4	2000	Powder coated steel	115/1/60	3.76	125°F	32" x 11.8" x 9.5"	65 / 79
NE0201264X	4X	2000	Stainless steel	115/1/60	3.76	125°F	32" x 11.8" x 9.5"	65 / 79
NE0201264XL4	4X	2000	Mill finish aluminum	115/1/60	3.76	125°F	32" x 11.8" x 9.5"	50 / 64
NE02023612	12	2000	Powder coated steel	230/1/60	3.07	125°F	32" x 11.8" x 9.5"	72 / 86
NE02023604	4	2000	Powder coated steel	230/1/60	3.07	125°F	32" x 11.8" x 9.5"	72 / 86
NE0202364X	4X	2000	Stainless steel	230/1/60	3.07	125°F	32" x 11.8" x 9.5"	72 / 86
NE0202364XL4	4X	2000	Mill finish aluminum	230/1/60	3.07	125°F	32" x 11.8" x 9.5"	57 / 71
NE02048612	12	2000	Powder coated steel	460/1/60	0.94	125°F	38" x 11.8" x 9.5"	99 / 113
NE02048604	4	2000	Powder coated steel	460/1/60	0.94	125°F	38" x 11.8" x 9.5"	99 / 113
NE0204864X	4X	2000	Stainless steel	460/1/60	0.94	125°F	38" x 11.8" x 9.5"	99 / 113
NE0204864XL5	4X	2000	Mill finish aluminum	460/1/60	0.94	125°F	38" x 11.8" x 9.5"	82 / 96



Testing done under controlled conditions. Actual performance may vary



ATTENTION: If ordering a replacement for a Thermal Edge air conditioner, please include the part number and serial number of the unit being replaced in your order. This will assure that we ship a replacement that is compatible with the cutout dimensions and power connection features of the older model.

All information subject to change without notice



Get the Edge... Get Thermal Edge
 Temperature Control Solutions for Electrical Enclosures

(972) 580-0200 • www.thermal-edge.com • thermalinfo@thermal-edge.com