



Thermal Edge Inc.™

Air Conditioner Options

REMOTE CONTROL & MONITOR

The digital controller used in all Thermal Edge air conditioners features the ability to remotely control, monitor and alarm the cooling and heating functions of the air conditioner. This can be done using a PLC connected to an industrial network or a personal computer (PC) connected to an Ethernet network.

PLC

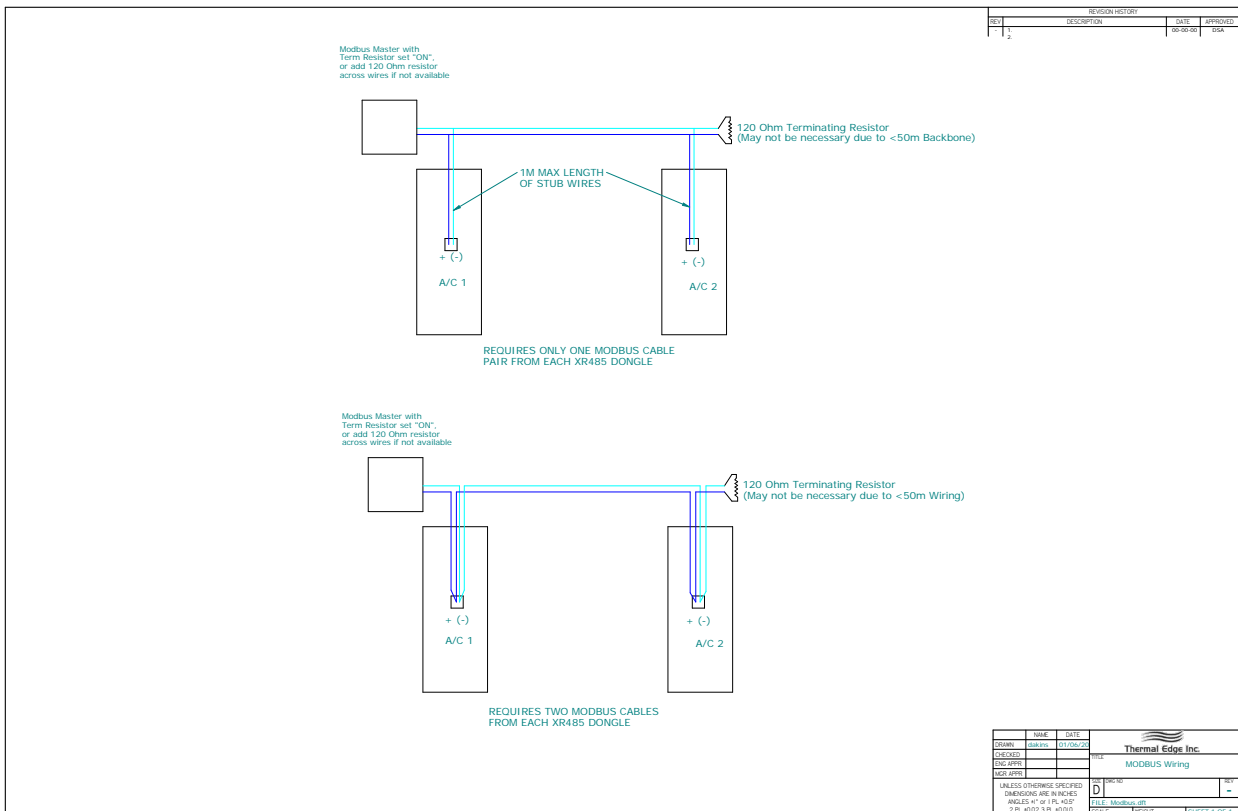
Control, Monitor & Alarm

- **ModBUS-RTU, RS485 (R1)**
 - RS485, 2 wire, network connection
- **User Supplied Gateway Connection**
 - RJ45 Ethernet connection to LAN
 - Internet connection with static IP address

Alarm Only

• Dry Contact

- High temperature alarm input signal to PLC
- Normally Open & Normally Closed (D3)



All information subject to change without notice

Get the Edge... Get Thermal Edge
Temperature Control Solutions for Electrical Enclosures

(972) 580-0200 • www.thermal-edge.com • thermalinfo@thermal-edge.com