



# Thermal Edge Inc.™

## HC121

12,000 BTUH

Indoor/Outdoor, UL Types 12, 4 & 4X Available



Engineered & manufactured to endure the most difficult of environments and applications. Thermal Edge air conditioners will exceed environmental requirements in applications like *Steel, Food Processing, Petro-Chemical, Cement, Paper & Pulp and Plastics.*



### Options:

- Dry Contact Alarm Capabilities
- Open Door Kill Switch
- Corrosive Environment Packages
- Low Ambient Packages
- Remote Monitoring Options
- Integrated Enclosure Heat System
- Hazardous Location Units
- Redundant Systems

### Digital Temperature Controller

- Programmable set point and temperature controls
- Visible Error and/or alarm messaging
- System status indication & keypad lockout function

### Active Condensate Evaporation System

- Constant elimination of condensate
- Increases unit efficiency by pre-cooling refrigerant

### Key Design Features

- Sloped top to allow for water runoff
- Designed with rigid chassis and seam welded shroud
- Thoughtful interior design for easy maintenance

### Unit Efficiency

- Temperature operated blower control reduces power inrush and saves energy
- Highly efficient rotary compressor
- Fully insulated & sealed cabinet
- Thermal Expansion Valve to maintain cooling capacity over a broad ambient temperature range

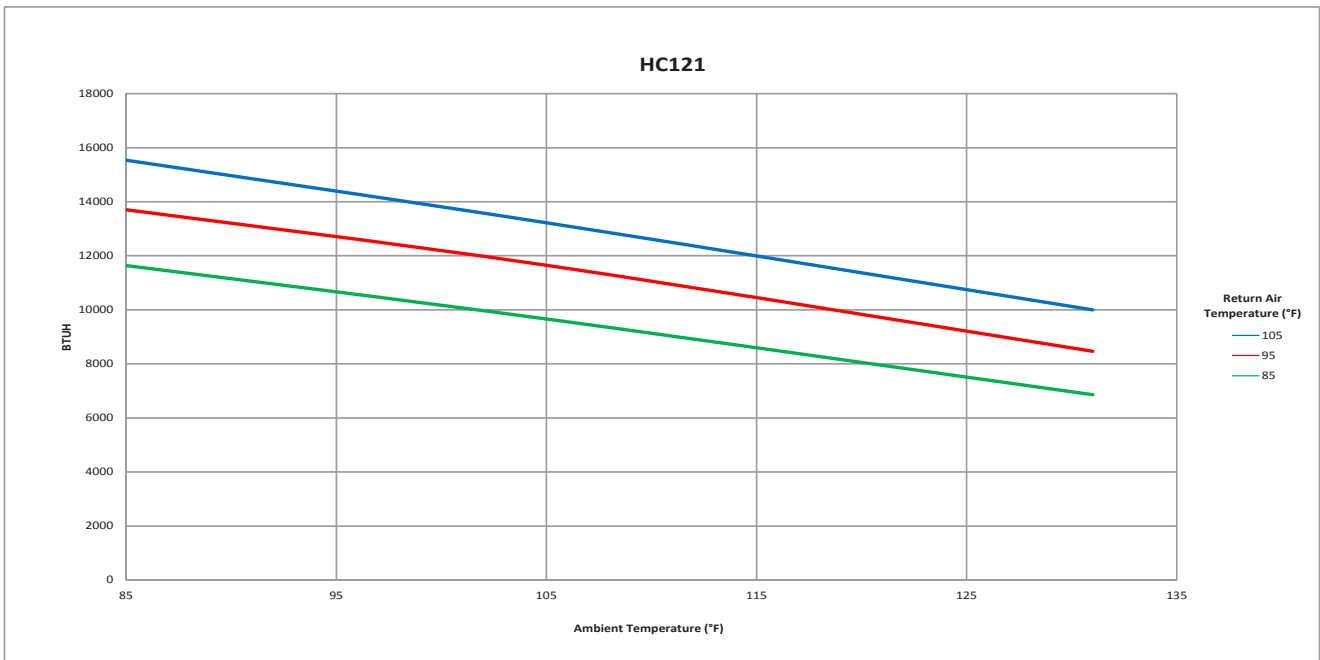
### Compressor Protection System

- High & Low refrigerant cutouts with fault indication
- Compressor anti short cycle protection
- Thermal overload protector
- Compressor run capacitors reduce power inrush, save energy and increase compressor life

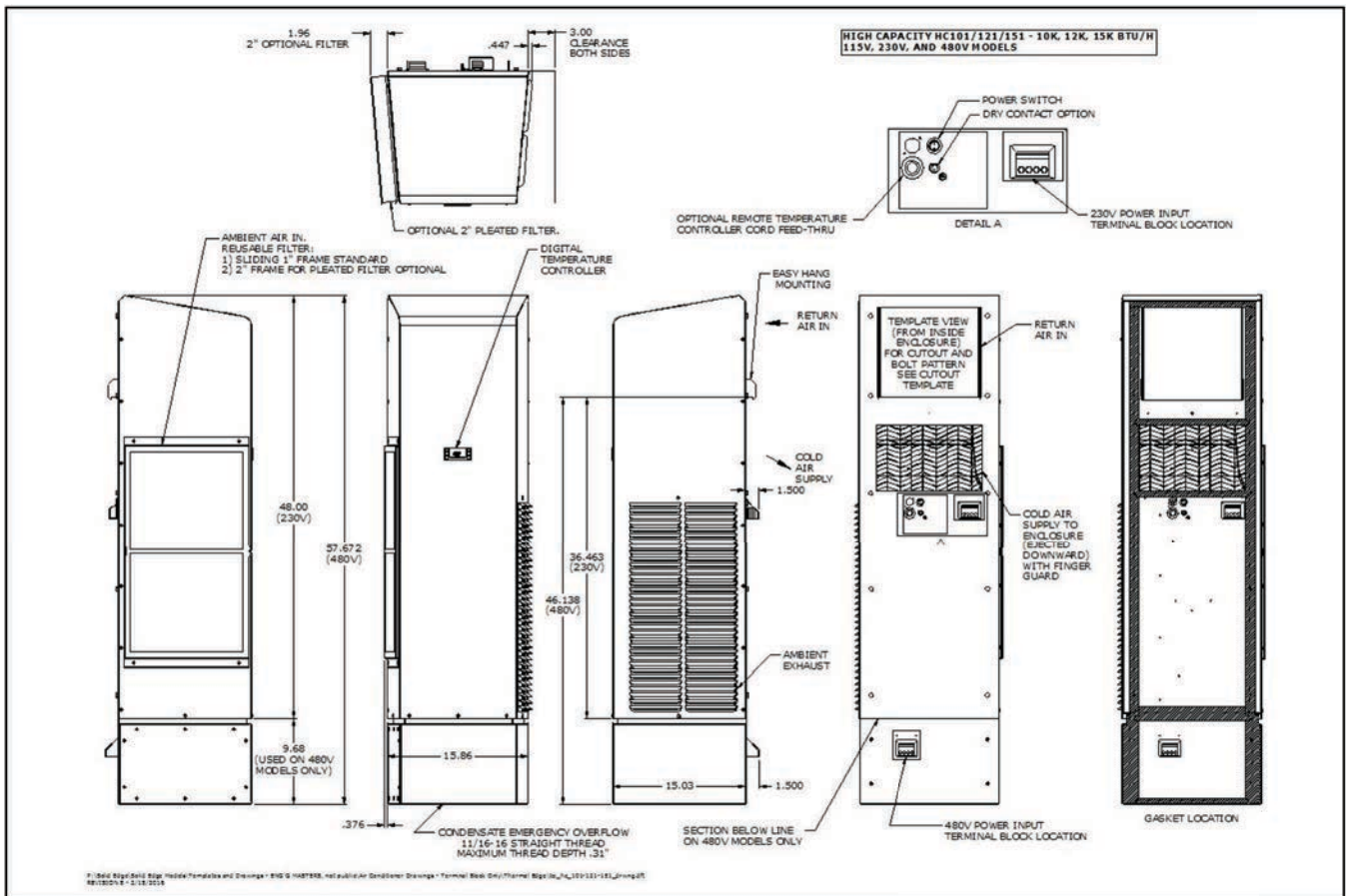


**NO WATER  
DRIPS FROM  
THERMAL EDGE  
ENCLOSURE AIR  
CONDITIONERS**

Model	UL Type	BTU/ Hour	Material	Voltage/ Phase/Hz.	Running Amps	Max. Amb. Temp.	H x W x D	Weight (lbs.) Unit/Ship
HC12112612	12	12,000	Powder coated steel	115/1/60	19.4	131°F	48" x 15.86" x 15.03"	167 / 185
HC12112604	4	12,000	Powder coated steel	115/1/60	19.4	131°F	48" x 15.86" x 15.03"	167 / 185
HC1211264X	4X	12,000	Stainless steel	115/1/60	19.4	131°F	48" x 15.86" x 15.03"	167 / 185
HC1211264XL4	4X	12,000	Mill finish aluminum	115/1/60	19.4	131°F	48" x 15.86" x 15.03"	137 / 155
HC12123612	12	12,000	Powder coated steel	230/1/60	8.2	131°F	48" x 15.86" x 15.03"	163 / 183
HC12123604	4	12,000	Powder coated steel	230/1/60	8.2	131°F	48" x 15.86" x 15.03"	163 / 183
HC1212364X	4X	12,000	Stainless steel	230/1/60	8.2	131°F	48" x 15.86" x 15.03"	163 / 183
HC1212364XL4	4X	12,000	Mill finish aluminum	230/1/60	8.2	131°F	48" x 15.86" x 15.03"	133 / 153
HC12148612	12	12,000	Powder coated steel	460/1/60	4.1	131°F	57.6" x 15.86" x 15.03"	237 / 280
HC12148604	4	12,000	Powder coated steel	460/1/60	4.1	131°F	57.6" x 15.86" x 15.03"	237 / 280
HC1214864X	4X	12,000	Stainless steel	460/1/60	4.1	131°F	57.6" x 15.86" x 15.03"	237 / 280
HC1214864XL5	4X	12,000	Mill finish aluminum	460/1/60	4.1	131°F	57.6" x 15.86" x 15.03"	201 / 244



Testing done under controlled conditions. Actual performance may vary



ATTENTION: If ordering a replacement for a Thermal Edge air conditioner, please include the part number and serial number of the unit being replaced in your order. This will assure that we ship a replacement that is compatible with the cutout dimensions and power connection features of the older model.

All information subject to change without notice



UL File # SA32252



**Get the Edge... Get Thermal Edge**  
 Temperature Control Solutions for Electrical Enclosures

(972) 580-0200 • www.thermal-edge.com • thermalinfo@thermal-edge.com

