

NE040D48

4000 BTUH 48 VDC Powered Air Conditioner
 Indoor/Outdoor, NEMA Types 12, 4 & 4X Available

Engineered & manufactured to endure the most difficult of environments and applications. Thermal Edge air conditioners will exceed environmental requirements in applications like *Telecom outside Plant, Off-Grid Solar, Wind & other Battery Powered Electrical Cabinets*



Digital Temperature Controller

- Programmable set point and temperature controls
- Visible Error and/or alarm messaging
- System status indication & keypad lockout function

Active Condensate Evaporation System

- Constant elimination of condensate
- Increases unit efficiency by pre-cooling refrigerant

Key Design Features

- Sloped top to allow for water runoff
- Designed with rigid chassis and seam welded shroud
- Thoughtful interior design for easy maintenance
- Narrow body style fits on 12" enclosure

Unit Efficiency

- Highly efficient rotary compressor
- Temperature operated condenser blower control saves energy
- Fully insulated & sealed cabinet
- Thermal Expansion Valve to maintain cooling capacity over a broad ambient temperature range

Compressor Protection System

- High & Low refrigerant cutouts with fault indication
- Compressor anti short cycle protection
- Compressor motor drive controller eliminates power in-rush, saves energy and increases compressor life

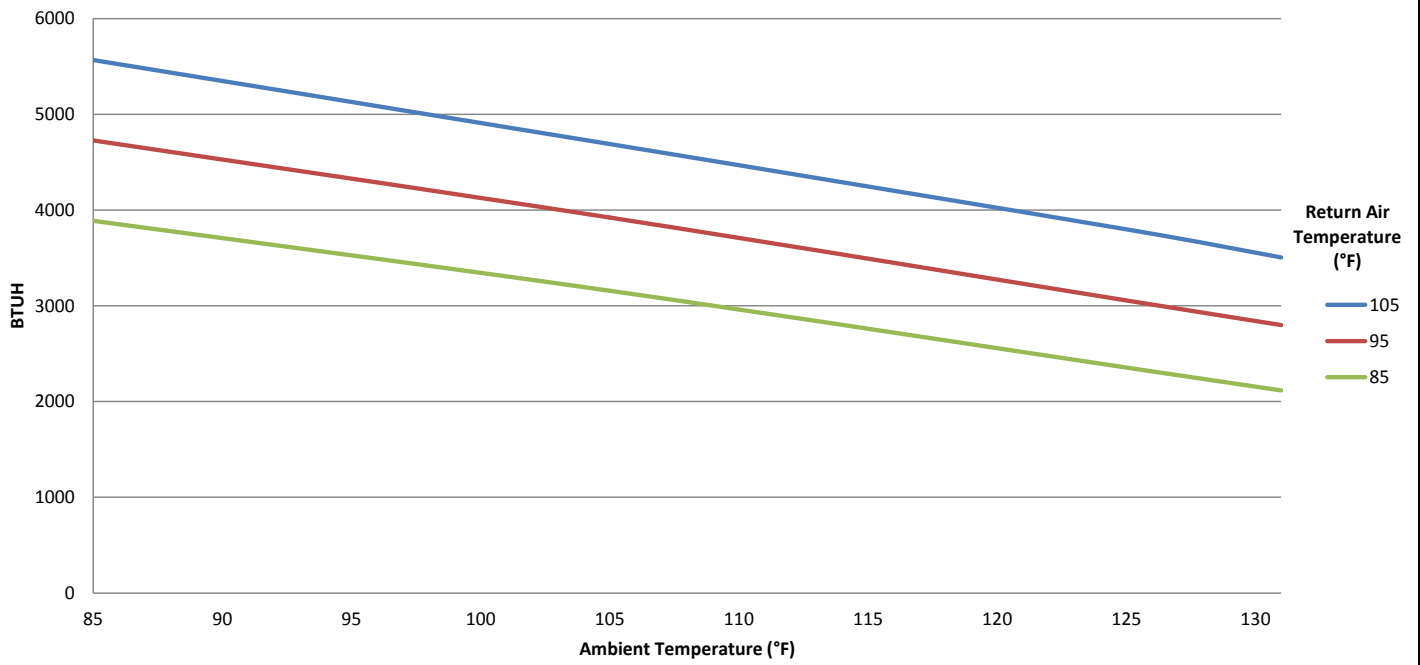
Options:

- Dry Contact Alarm
- Remote Controller
- Open Door Kill Switch
- Corrosive Environment Package
- Remote Monitoring Options
- Redundant Systems
- Tamper Resistant Filters

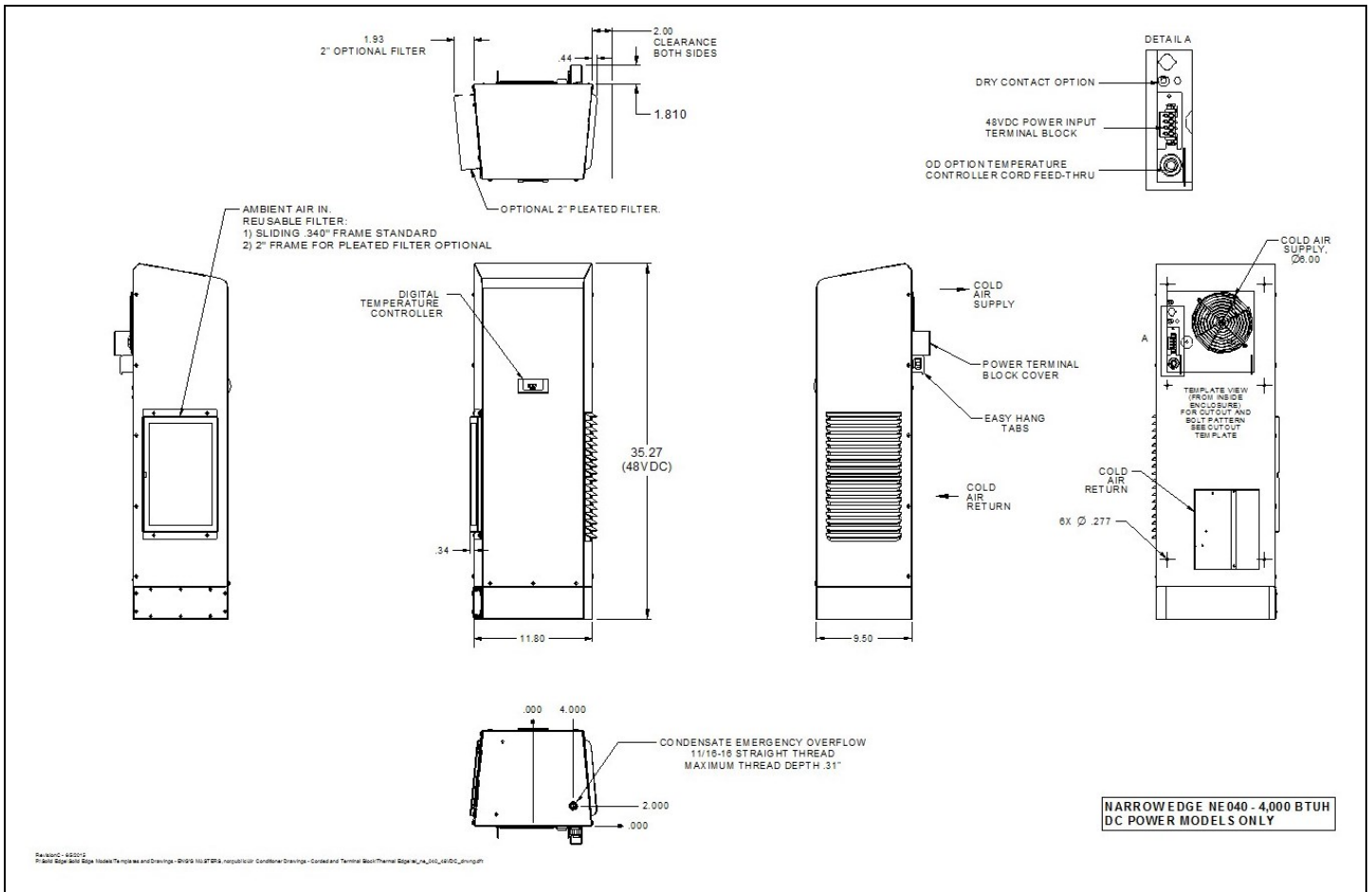
Model	BTU/ Hour	Material	Voltage/ Phase/Hz	Running Amps	Max Ambient Temperature	H x W x D	Weight (lbs.) Unit / Ship
NE040D4812	4000	Powder coated steel	48 VDC	22.3	131°F	35.27" x 11.8" x 9.5"	103 / 120
NE040D4804	4000	Powder coated steel	48 VDC	22.3	131°F	35.27" x 11.8" x 9.5"	103 / 120
NE040D484X	4000	Stainless steel	48 VDC	22.3	131°F	35.27" x 11.8" x 9.5"	103 / 120



NE040D48



Testing done under controlled conditions. Actual performance may vary



UL File # SA32252

All information subject to change without notice

