



NE020

2000 BTUH

Indoor/Outdoor, NEMA Types 12, 4 & 4X Available

Engineered & manufactured to endure the most difficult of environments and applications. Thermal Edge air conditioners will exceed environmental requirements in applications like *Steel, Food Processing, Petro-Chemical, Cement, Paper & Pulp and Plastics.*



No water drips from Thermal Edge enclosure air conditioners

Options:

- Dry Contact Alarm Capabilities
- Open Door Kill Switch
- Corrosive Environment Package
- Low Ambient Packages
- Remote Monitoring Options
- Integrated Enclosure Heat System
- Hazardous Location Units
- Redundant Systems

Digital Temperature Controller

- Programmable set point and temperature controls
- Visible Error and/or alarm messaging
- System status indication & keypad lockout function

Active Condensate Evaporation System

- Constant elimination of condensate
- Increases unit efficiency by pre-cooling refrigerant

Key Design Features

- Sloped top to allow for water runoff
- Designed with rigid chassis and seam welded shroud
- Thoughtful interior design for easy maintenance
- Narrow body style fits on 12" enclosure

Unit Efficiency

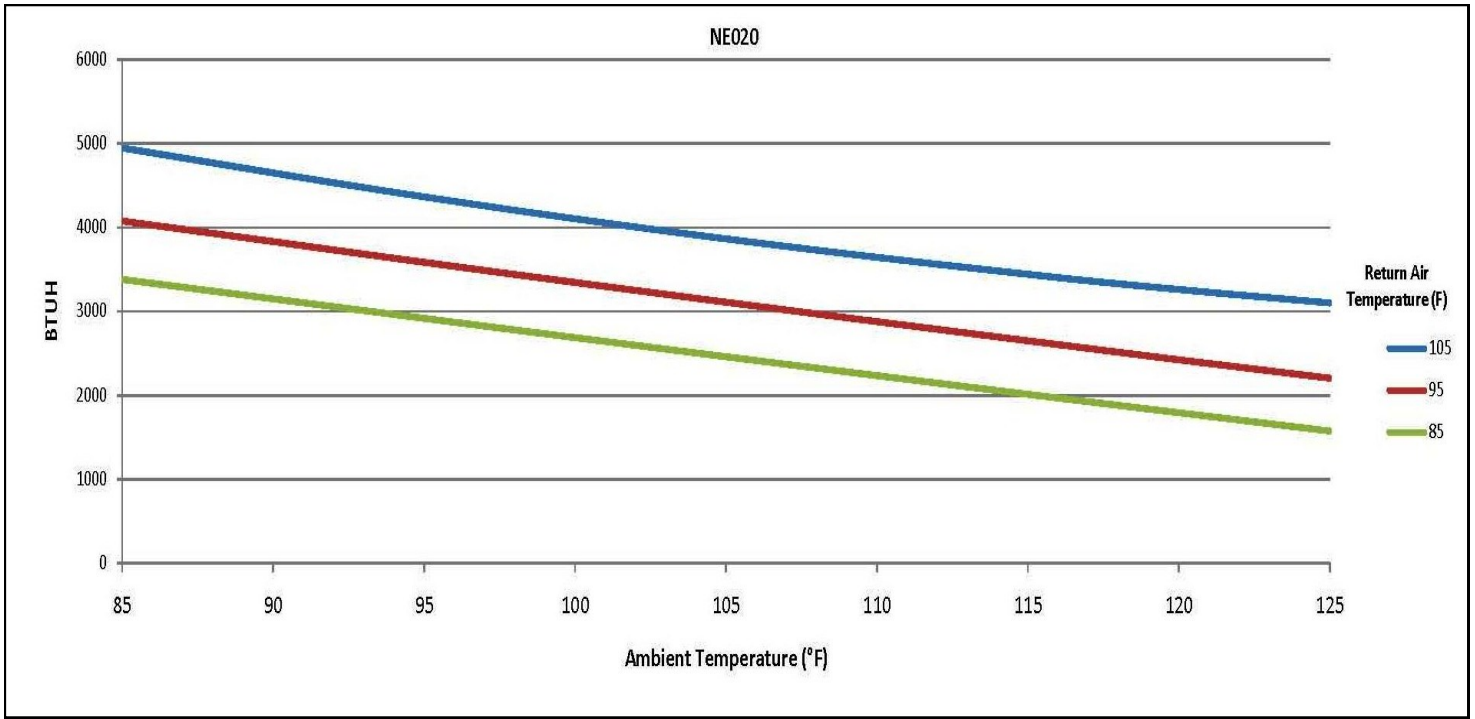
- Temperature operated blower control reduces power inrush and saves energy
- Highly efficient rotary compressor
- Fully insulated & sealed cabinet
- Thermal Expansion Valve to maintain cooling capacity over a broad ambient temperature range

Compressor Protection System

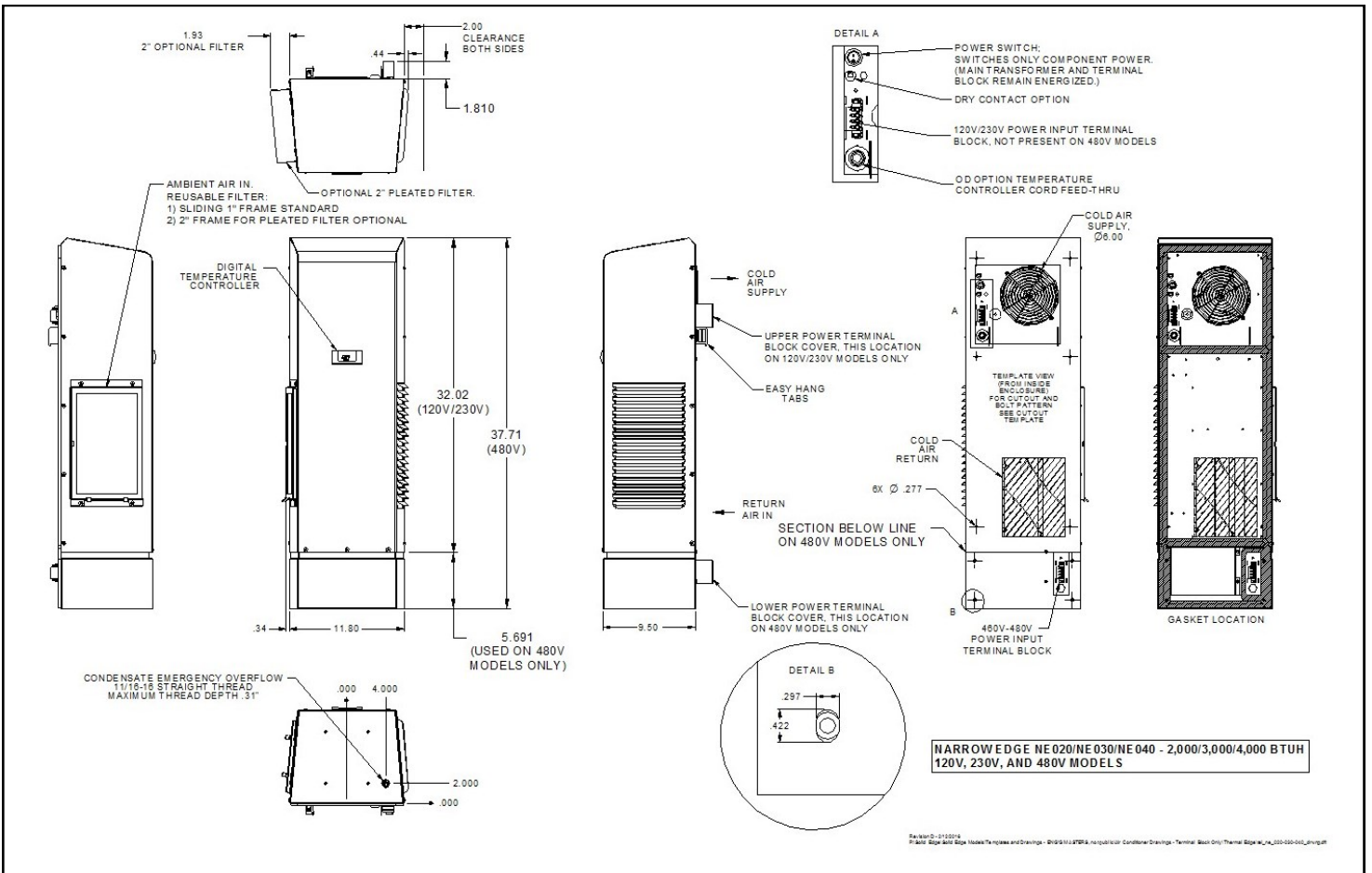
- High & Low refrigerant cutouts with fault indication
- Compressor anti short cycle protection
- Compressor run capacitors reduce power inrush, save energy and increase compressor life

Model	BTU/H	Material	Voltage/ Phase/Hz	Running Amps	Max Ambient Temperature	H x W x D	Weight (lbs.) Unit / Ship
NE02012612	2000	Powder coated steel	120/1/60	3.76	125°F	32" x 11.8" x 9.5"	65 / 79
NE02012604	2000	Powder coated steel	120/1/60	3.76	125°F	32" x 11.8" x 9.5"	65 / 79
NE0201264X	2000	Stainless steel	120/1/60	3.76	125°F	32" x 11.8" x 9.5"	65 / 79
NE02023612	2000	Powder coated steel	230/1/60	3.07	125°F	32" x 11.8" x 9.5"	72 / 86
NE02023604	2000	Powder coated steel	230/1/60	3.07	125°F	32" x 11.8" x 9.5"	72 / 86
NE0202364X	2000	Stainless steel	230/1/60	3.07	125°F	32" x 11.8" x 9.5"	72 / 86
NE02048612	2000	Powder coated steel	480/1/60	0.93	125°F	38" x 11.8" x 9.5"	99 / 113
NE02048604	2000	Powder coated steel	480/1/60	0.93	125°F	38" x 11.8" x 9.5"	99 / 113
NE0204864X	2000	Stainless steel	480/1/60	0.93	125°F	38" x 11.8" x 9.5"	99 / 113





Testing done under controlled conditions. Actual performance may vary



2017-05-22



ATTENTION: If ordering a replacement for a Thermal Edge air conditioner, please include the part number and serial number of the unit being replaced in your order. This will assure that we ship a replacement that is compatible with the cutout dimensions and power connection features of the older model.

All information subject to change without notice

