

CS020

2000 BTUH

Indoor/Outdoor, NEMA Types 12, 4 & 4X Available

Engineered & manufactured to endure the most difficult of environments and applications. Thermal Edge air conditioners will exceed environmental requirements in applications like *Steel, Food Processing, Petro-Chemical, Cement, Paper & Pulp and Plastics.*



Digital Temperature Controller

- Programmable set point and temperature controls
- Visible Error and/or alarm messaging
- System status indication & keypad lockout function

Active Condensate Management System

- Constant elimination of condensate
- Increases unit efficiency by pre-cooling refrigerant

Key Design Features

- Sloped top to allow for water runoff
- Designed with rigid chassis and seam welded shroud
- Thoughtful interior design for easy maintenance
- Narrow body style fits on 10" enclosure

Unit Efficiency

- Highly efficient Rotary Compressor
- Fully insulated & sealed cabinet
- Thermal Expansion Valve to maintain cooling capacity over a broad ambient temperature range

Compressor Protection System

- High & Low refrigerant cutouts with fault indication
- Compressor anti short cycle protection
- Compressor run capacitors reduce power inrush, save energy and increase compressor life

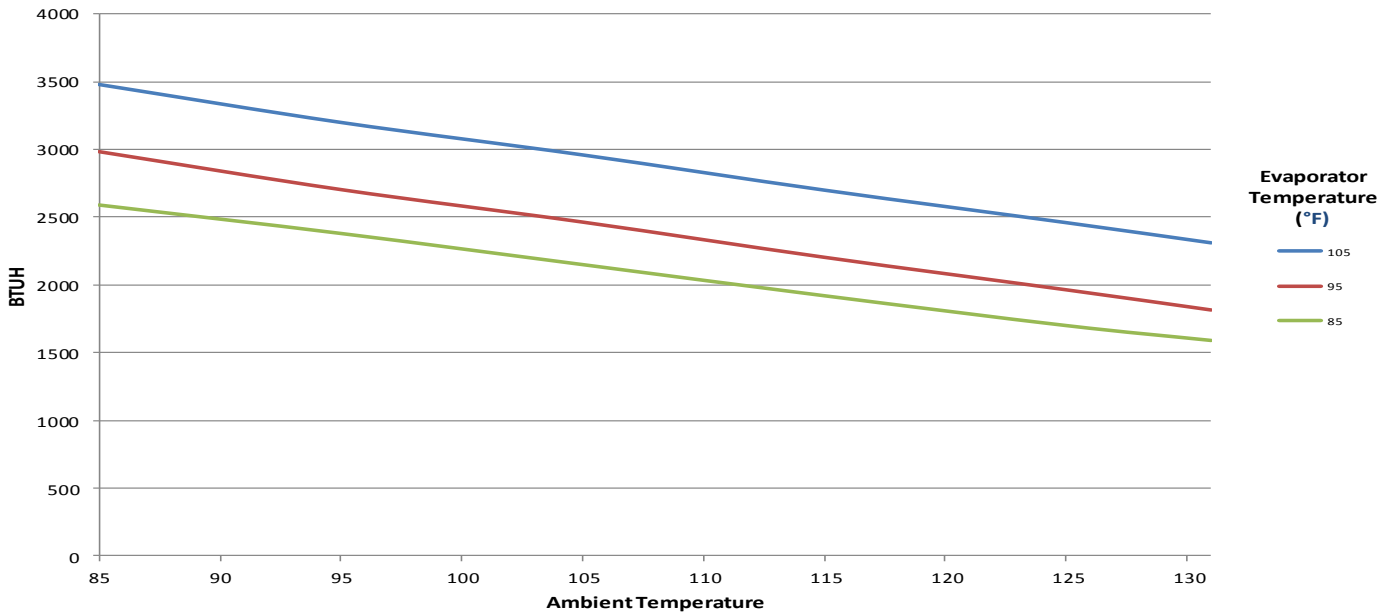
Options:

- Dry Contact Alarm Capabilities
- Open Door Kill Switch
- Corrosive Environment Package
- Low Ambient Packages
- Remote Monitoring Options
- Integrated Enclosure Heater System

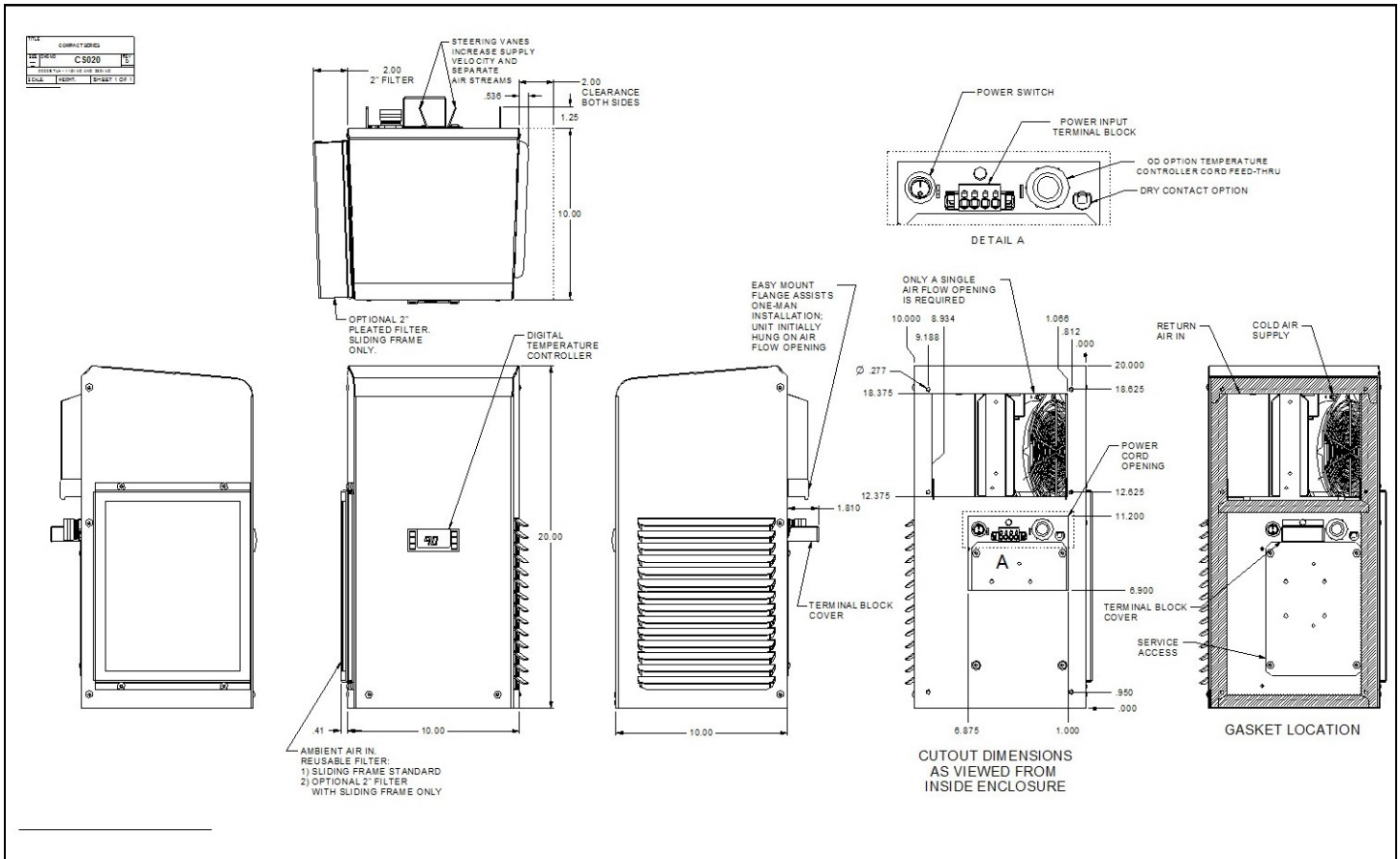
Model	BTU/ Hour	Material	Voltage/ Hz.	Running Amps	Max. Ambient Temp	H x W x D	Weight (lbs.) Unit / Ship
CS02012612	2000	Powder coated steel	120V/1/60	3.36	131°F	20" x 10" x 10"	44 / 58
CS02012604	2000	Powder coated steel	120V/1/60	3.36	131°F	20" x 10" x 10"	44 / 58
CS0201264X	2000	304 Stainless	120V/1/60	3.36	131°F	20" x 10" x 10"	44 / 58
CS02023612	2000	Powder coated steel	230V/1/60	2.0	131°F	20" x 10" x 10"	49 / 63
CS02023604	2000	Powder coated steel	230V/1/60	2.0	131°F	20" x 10" x 10"	49 / 63
CS0202364X	2000	304 Stainless	230V/1/60	2.0	131°F	20" x 10" x 10"	49 / 63



CS020



Testing done under controlled conditions. Actual performance may vary



ATTENTION: If ordering a replacement for a Thermal Edge air conditioner, please include the part number and serial number of the unit being replaced in your order. This will assure that we ship a replacement that is compatible with the cutout dimensions and power connection features of the older model.

All information subject to change without notice

2017-05-22

