

HC121

12,000 BTUH

Indoor/Outdoor, NEMA Types 12, 4 & 4X Available

Engineered & manufactured to endure the most difficult of environments and applications. Thermal Edge air conditioners will exceed environmental requirements in applications like *Steel, Food Processing, Petro-Chemical, Cement, Paper & Pulp and Plastics.*



No water drips from Thermal Edge enclosure air conditioners

Digital Temperature Controller

- Programmable set point and temperature controls
- Visible Error and/or alarm messaging
- System status indication with keypad lockout function

Active Condensate Evaporation System

- Constant elimination of condensate
- Increases unit efficiency by pre-cooling refrigerant

Key Design Features

- Sloped top to allow for water runoff
- Designed with rigid chassis and seam welded shroud
- Thoughtful interior design for easy maintenance

Unit Efficiency

- Pressure operated blower control reduces power inrush and saves energy
- Highly efficient rotary compressor
- Fully insulated & sealed cabinet
- Thermal Expansion Valve to maintain cooling capacity over a broad ambient temperature range

Compressor Protection System

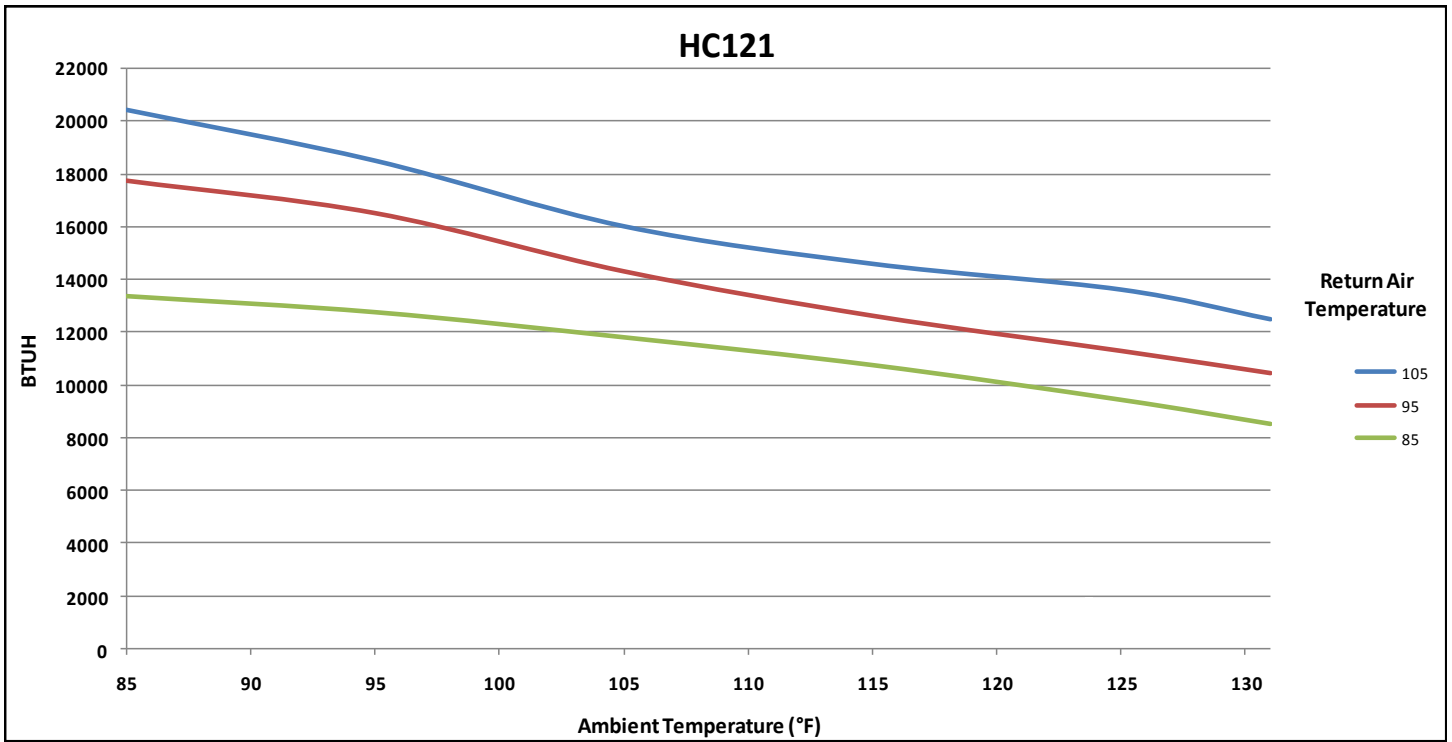
- High & Low refrigerant cutouts with fault indication
- Compressor anti short cycle protection
- Compressor run capacitors reduce power inrush, save energy and increase compressor life

Options:

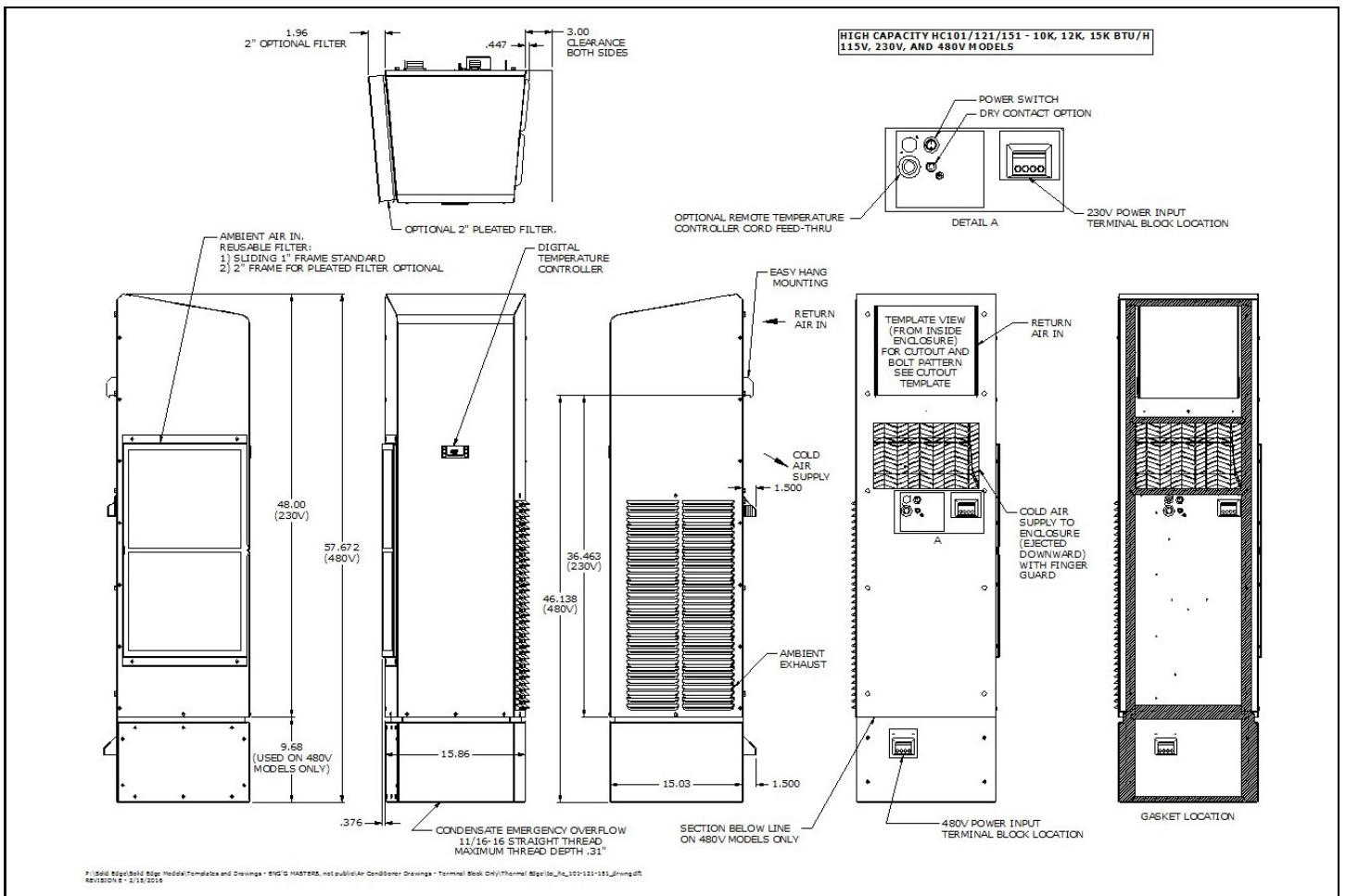
- Dry Contact Alarm Capabilities
- Open Door Kill Switch
- Corrosive Environment Package
- Low Ambient Package
- Remote Monitoring Options
- Integrated Enclosure Heater System
- Hazardous Location Package
- Redundant System

Model	BTU/ Hour	Material	Voltage/ Phase/Hz	Running Amps	Max Ambient Temperature	H x W x D	Weight (lbs.) Unit / Ship
HC12112612	12,000	Powder coated steel	120/1/60	19.40	131°F	48" x 15.86" x 15.03"	167 / 185
HC12112604	12,000	Powder coated steel	120/1/60	19.40	131°F	48" x 15.86" x 15.03"	167 / 185
HC1211264X	12,000	Stainless steel	120/1/60	19.40	131°F	48" x 15.86" x 15.03"	167 / 185
HC12123612	12,000	Powder coated steel	230/1/60	8.20	131°F	48" x 15.86" x 15.03"	163 / 183
HC12123604	12,000	Powder coated steel	230/1/60	8.20	131°F	48" x 15.86" x 15.03"	163 / 183
HC1212364X	12,000	Stainless steel	230/1/60	8.20	131°F	48" x 15.86" x 15.03"	163 / 183
HC12148612	12,000	Powder coated steel	480/1/60	3.93	131°F	56.6" x 15.86" x 15.03"	237 / 280
HC12148604	12,000	Powder coated steel	480/1/60	3.93	131°F	56.6" x 15.86" x 15.03"	237 / 280
HC1214864X	12,000	Stainless steel	480/1/60	3.93	131°F	56.6" x 15.86" x 15.03"	237 / 280





Testing done under controlled conditions. Actual performance may vary



2017-05-22



ATTENTION: If ordering a replacement for a Thermal Edge air conditioner, please include the part number and serial number of the unit being replaced in your order. This will assure that we ship a replacement that is compatible with the cutout dimensions and power connection features of the older model.

All information subject to change without notice

